



# REACH HIGHER

Complete your education. Own your future.

## REACH HIGHER NEW ENGLAND CONVENING

Reaching Higher In New England:  
Increasing Post-secondary Access and  
Opportunities for All Students

**August 16, 2016**  
Assumption College  
Hagan Campus Center  
8 am – 4 pm





# ASSUMPTION COLLEGE

WORCESTER, MASSACHUSETTS | ROME, ITALY

Light the way.



Students flourish at Assumption College. Strong academic programs in the liberal arts, sciences, business and professional studies, rooted in the rich Catholic intellectual tradition, will provide you with the skills you'll need to excel.

But there's more to education than coursework. At Assumption we'll help you cultivate the character and personal values you'll need to meet the demands of a changing world. The campus community will challenge and support you to achieve more than you thought possible, and put you on the path to leading a life of meaning.

**Find your light at Assumption, and learn how to share it with the world.**

500 Salisbury Street • Worcester, MA 01609  
[www.assumption.edu](http://www.assumption.edu) • 866.477.7776

## GET THE FACTS

- :: 41 majors and 48 minors in the liberal arts, sciences, business and professional studies
- :: 2,000 undergraduates from 25 states and 36 countries
- :: 87 percent of the students live on campus in guaranteed housing all four years
- :: Founded in 1904, Assumption is the fourth-oldest Catholic college in New England
- :: Students can choose from more than 60 student clubs and organizations
- :: Named by the *Princeton Review* as a **Best College in the Nation**
- :: 24 top-performing NCAA Division II athletic teams
- :: 12:1 student/faculty ratio
- :: Merit scholarships up to \$20,000 annually
- :: Located in the 2nd-largest city in New England, Worcester has more than 30,000 college students overall
- :: Our Rome campus is ranked a **Top Ten study abroad program** in the nation



## **Reaching Higher In New England: Increasing Postsecondary Access and Opportunities for All Students**

8:00 - 8:30	Registration and breakfast items available – Hagan Hall						
8:30 – 9:15	<b>Welcome– Hagan Hall – Bob Bardwell, Monson High School</b> Assumption College Welcome – President, Francesco Cesareo Reach Higher Welcome, Don Yu, Director Better Make Room Career & College Readiness K-12 – Mitchell Chester, Commissioner, MA DESE Higher education in New England, Carlos Santiago, Commissioner, MA Dept of Higher Education						
9:15 – 9:45	<b>Keynote Speaker – Hagan Hall – Josh Steckel</b> , Senior College and Career Planning Manager for New York City's College Access for All Initiative						
9:45 – 10:30	<b>Understanding Reach Higher Breakouts</b> <ul style="list-style-type: none"> <li>Novice – Hagan Hall – Don Yu, Director Better Make Room, Julie Heinz, Reach Higher Rachelle Perusse, UCONN &amp; Scott Solberg, Boston University</li> <li>Advanced – Charlie's – Hagan Campus Center 1st Floor – Mandy Savitz Romer, Harvard University, Kim Traverso, CT State Department of Education &amp; Keith Westrich, MA Department of Elementary &amp; Secondary Education</li> </ul>						
10:30 – 10:45	<b>Break</b>						
10:45 – 11:30	<b>Panel - sharing of best practices and resources – Hagan Hall</b> Rebecca Lallier, Dothan Brook School VT, Chanda Womack College Crusade RI, Jennifer Parzych, Southern CT State University & Jerry Ellner, Universal Technical Institute						
11:30 – 1:30	<b>Lunch – Taylor Dining Hall &amp; State level team meetings</b> <table border="0"> <tr> <td>CT – Kennedy Room 203</td><td>MA – Hagan Hall</td></tr> <tr> <td>ME – Kennedy Room 12</td><td>NH – Kennedy Room 13</td></tr> <tr> <td>RI – Kennedy Room 201</td><td>VT – Kennedy Room 200</td></tr> </table>	CT – Kennedy Room 203	MA – Hagan Hall	ME – Kennedy Room 12	NH – Kennedy Room 13	RI – Kennedy Room 201	VT – Kennedy Room 200
CT – Kennedy Room 203	MA – Hagan Hall						
ME – Kennedy Room 12	NH – Kennedy Room 13						
RI – Kennedy Room 201	VT – Kennedy Room 200						
1:30 – 2:45	<b>Work alike group breakouts</b> <ul style="list-style-type: none"> <li>School counselors – Hagan Hall – Ruth Carrigan, MASCA, Bill Pepin, RISCA, Jennifer Parzych, CSCA, &amp; Rebecca Lallier. VTSCA</li> <li>School counselor educators – Kennedy 13 – Rachelle Perusse, UCONN, Tim Poynton, UMASS Boston, Deb Drew, Husson University &amp; Mandy Savitz-Romer, Harvard University</li> <li>Financial aid professionals – Kennedy 12 – Martha Savery, MEFA, Erica Rose, uAspire &amp; Mila Tappan, Finance Authority of Maine</li> <li>College access partners – Kennedy Room 203 – Robert Dais, Gear Up MA, Deborah McCann, Educational Talent Search (NH), Melissa Goyait, Educational Talent Search (NH) &amp; Nicole Vachon, Finance Authority of Maine (ME)</li> <li>Policy makers – Kennedy 200 – Susan Lusi, Mass Insights, Julie Heinz, Reach Higher &amp; George Edwards, NEASC</li> <li>College admissions – Kennedy 201 – Erin Earle, University of Rhode Island, Deb Johns, Yale University &amp; Andrew Rosabianca, St. Anselms's College</li> <li>K-12 school districts – Kennedy 205 – Cheryl Clarke, Monson Public Schools (MA), Carol Woodbury, Dennis-Yarmouth Regional Schools (MA) &amp; Jaunice Edwards, Agricultural Science Education (CT)</li> <li>Higher education – Kennedy 204 – Robert Johnson, Becker College, Michael Thomas, NE Board of Higher Education &amp; Sue Lane, MA Department of Higher Education</li> </ul>						
2:45 – 3:00	<b>Break</b>						
3:00 – 4:00	<b>Closing - Sharing challenges, report out, commitments and next steps – Hagan Hall</b>						



THE WHITE HOUSE

July 29, 2016

I am pleased to send my warmest greetings to those gathered for the Reach Higher New England convening, and to thank you for your efforts in increasing access to higher education for young people in your region.

With the aim of reaching this Administration's North Star goal of having the highest proportion of college graduates in the world by 2020, one of my top priorities as First Lady has been encouraging students to pursue and attain an education beyond high school. In order to achieve this plan, I know we need committed, well-trained counselors and teachers who can provide our students with the tools, assistance, and skills they need to fulfill their boundless potential. That's why I'm so proud of each of you for answering the call to fight for a brighter tomorrow for our youth. Your important work is helping to inspire more students to take charge of their future, and for that, I am incredibly grateful.

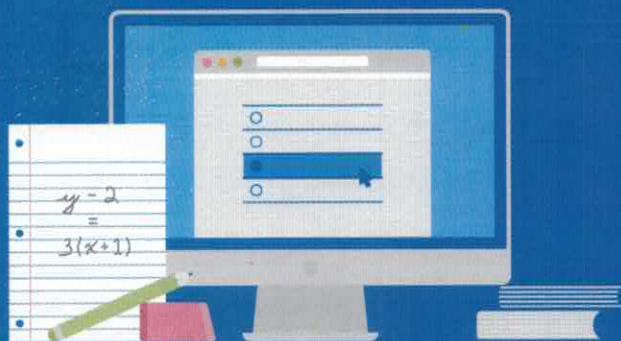
Again, thank you for your continued efforts on behalf of students across our country. I look forward to witnessing your progress and accomplishments in the years to come, and I wish you the very best.

*Michelle Obama*



# Official SAT Practice

Free, world-class test  
practice from Khan  
Academy and the  
creators of the SAT



Introducing free,  
personalized  
SAT® practice  
brought to you by  
Khan Academy and  
the maker of the test.

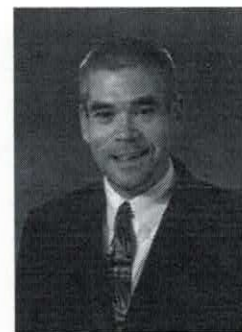
For students  
who've taken  
the PSAT/NMSQT®  
or any other student  
getting ready for  
the SAT, there's  
simply no better  
place to start.

For more information,  
visit **[satpractice.org](http://satpractice.org)**.

# A NOTE FROM THE CHAIR

Dear participant-

I am thrilled that you are here today to join the region in celebrating the inaugural *Reach Higher New England Convening*, bringing over 300 of the region's school counselors, school counselor educators, college access partners, financial aid administrators, college admission officers, K-12 and higher education leaders, graduate students and policy makers to this gathering to learn more about and to help implement the First Lady's Reach Higher initiative throughout New England.



The idea to create this program was born in Jacksonville last year at the third national White House Reach Higher Convening. Since then organizers have been meeting monthly to plan every last detail to make this program a success. The goal is that you will return to your state, region and school or organization with the energy and enthusiasm to implement new programs and initiatives in support of the Reach Higher mission.

I want to take this opportunity to thank the Planning Team, many of whom have not ever been to a Reach Higher Convening previously. I am so appreciative that they took a leap of faith, believed in the mission of Reach Higher and gave of their time and talents to assist in helping to plan this unique and inspirational event. In addition, I want to thank the numerous volunteers, Assumption College staff and the many others who have assisted in making this program possible. Finally, I want to thank our sponsors - Assumption College, the College Board, Universal Technical Institute and the New England Association for College Admission Counseling - for their generous support in making this day possible. Without their financial assistance this program would not have been possible.

I expect your day will be filled with numerous opportunities for learning, networking and action. I hope you leave today's Convening inspired to do at least one new thing to help students to "Reach Higher" and pursue some sort of training or education after high school graduation. Make a pledge, which in turn will positively impact our youth today, tomorrow and beyond. Your involvement will make a difference.

Sincerely,

A handwritten signature in cursive script that reads "Bob Bardwell".

Bob Bardwell, Convening Chair

## MEET THE PLANNING TEAM

Bob Bardwell, Monson High School (MA)

Tori Berube, New Hampshire Higher Education Assistance Foundation Network (NH)

Stacy Crooks, College Planning Center (RI)

Julie Heinz, Reach Higher (DC)

Patrick Leduc, Vermont Student Assistance Corporation (VT)

Kate Leveille, Maine College Access Network (ME)

Christine Luzi, Bridgewater State University (MA)

Rachelle Perusse, University of Connecticut, Storrs (CT)

Tim Poynton, University of Massachusetts, Boston (MA)

Mandy Savitz-Romer, Harvard University (MA)

Brian Tracey, University of Saint Joseph (CT)

Kim Traverso, Connecticut Department of Education (CT)

Nikki Vachon, Finance Authority of Maine (ME)

Gail Walker, Rhode Island Student Loan Authority (RI)

Don Yu, Better Make Room (DC)



# MEET OUR PRESENTERS

**Bob Bardwell** is a School Counselor and Director of School Counseling for the Monson Public Schools. He is Team Lead for the Reach Higher Massachusetts Team and is a member of MASCA, NEACAC, WMCA, ASCA and NACAC. He is an adjunct professor at Fitchburg State University and Westfield State University teaching school and college counseling courses. He can be reached at [bardwellr@monsonschools.com](mailto:bardwellr@monsonschools.com).

**Tori Berube** is the Vice President for College Planning & Community Engagement at The NHHEAF Network Organizations. She is the state coordinator for New Hampshire's "I Am College Bound/I Applied" College Application Week and is actively involved in various college access, persistence, and success initiatives statewide. She can be reached at [tberube@nhheaf.org](mailto:tberube@nhheaf.org).

**Ruth Carrigan** is a school counselor and director of school counseling at Whitman-Hanson Regional High School in Whitman, MA. Prior to her 18 year career as a school counselor, Ruth spent a number of years working in the field of college admissions. Ruth is the immediate past president and current professional development chair for the Massachusetts School Counselors Association. She is part of the Leadership Team for Reach Higher MA and is a member of NEACAC, SSGA, and ASCA. Ruth can be reached at [Ruth.Carrigan@whrsd.org](mailto:Ruth.Carrigan@whrsd.org).

**Dr. Mitchell Chester** began his career as an elementary school teacher in Connecticut, and later served as a middle school assistant principal and district curriculum coordinator. From there he moved to the Connecticut State Department of Education where he oversaw curriculum and instructional programs. In 1997 he was named the Executive Director for Accountability and Assessment for Philadelphia, where he headed the offices of Assessment, Research and Evaluation, Student and School Progress, and Pupil Information Services. In 2001, he served as the Senior Associate Superintendent for Policy and Accountability for the Ohio Department of Education, where he oversaw standards, assessments, accountability, policy development, and strategic planning. Dr. Chester began serving as Commissioner of the Massachusetts public schools in May 2008.

**Cheryl Clarke** has been an administrator in the Monson (MA) Public Schools for the past eleven years beginning as the Assistant Principal at Granite Valley Middle School, moving to Principal in 2007 and then being chosen to lead the district as Superintendent in 2013. Prior to that she worked in three other districts as an English Language Arts teacher and administrator. She is completing her doctorate in Educational Leadership at Nova Southeastern University. She can be reached at [clarkec@monsonschools.com](mailto:clarkec@monsonschools.com).

**Robert E. Dais** is the Director of GEAR UP Massachusetts which offers college & career readiness services to more than 7,000 students throughout the state. He has taught mathematics, been a middle school principal, co-authored the textbook entitled, Calculated Success: A Step by Step Guide to Balanced Math Instruction that Works. He can be reached at: [rdais@osfa.mass.edu](mailto:rdais@osfa.mass.edu).

**Dr. Deborah Drew** is a Professor and Director of the Counseling graduate program at Husson University in Bangor, Maine, where she teaches courses in school counseling, career development and counseling, and practicum. A former school counselor, Deb is a member of the Reach Higher Maine Team and a member of ACA, ASCA, ACES, MeCA, MESCA, NCDA, and MeCDA. She can be reached at [drewd@husson.edu](mailto:drewd@husson.edu).



# PRESENTERS (CONTINUED)

**Dr. Erin Earle** is the Director for the Campus Visit Experience at The University of Rhode Island. Erin is a native Rhode Islander who is privileged to represent her two time alma mater receiving both a B.A. in Public Relations and M.S. in College Student Personnel at URI. She received her Doctorate in Education in 2014 from Johnson & Wales University conducting her dissertation research on student veterans and the admission process. Erin is an active member of NACAC, NEACAC, RIAAO, and the co-founder of WCAP. Erin can be reached at [erinearle@uri.edu](mailto:erinearle@uri.edu).

**George Edwards** is the Director of the Commission on Public Schools for the New England Association of Schools and Colleges. The Commission has 750 member schools in the six New England states. He was a high school teacher and principal in New Hampshire for twenty-five years and was the founding principal of two brand new high schools in Bow, NH and Bedford, NH. He is an adjunct professor in the School of Education at Southern New Hampshire University and serves on the boards of the Advanced Studies Program at St. Paul's School and the Pine Haven Boys' Center. George lives in Concord, NH with his wife and has two grown sons who are involved in education.

**Jerry Ellner** is the national director of high school development at Universal Technical Institute. He serves on the STEM Education Coalition Board of Directors, the Industry Workforce Needs Coalition and the Opportunity Nation Coalition. Ellner is a Vietnam-era veteran and served as a combat intelligence specialist in the United States Army. He is a graduate of the Joel Hornstein School of Middle East Studies at Brandeis University. He is the father of four adult children, grandfather of nine and lives in Manchester, N.H.

**Melissa Goyait** is the Associate Director for the Educational Talent Search/TRIO program out of the University of New Hampshire. This college access program serves first generation, low-income, students grades 6-12 in 19 high schools and 11 middle schools throughout every region of NH. She has served in this role for almost five years and previously served as a high school assistant principal and high school teacher.

**Debra Johns** is associate director of admissions at Yale University. She has been an active member and leader of NEACAC and NACAC since 1984, serving in multiple roles. She can be reached at [debra.johns@yale.edu](mailto:debra.johns@yale.edu).

**Julie Heinz** recently transitioned full time to her role as a Special Advisor on postsecondary access and completion strategies to the Reach Higher Initiative, after providing support to the initiative during her five years serving at the Department of Education's, Office of Postsecondary Education (OPE). At OPE she led the development and implementation of the President's First in the World grant competition, part of the President's Blueprint to keep college affordable and within reach to all students. Prior to serving in the Obama administration Julie was the Northeast Organizer at The ONE Campaign, later recruited to become the Northeast Advocacy Organizer for CARE USA's CARE Action Network. Julie received her B.A. in Child Development and Psychology from California State University of Chico, an M.A. in International Education and Exchange Management from the SIT Graduate Institute in Brattleboro, VT and started a non-profit that takes high school students on educational trips abroad.

**Rebecca Lallier** is a PreK-5 school counselor at the Dothan Brook School in White River Junction, VT, which has been recognized as a RAMP School of Distinction by the American School Counselor Association (ASCA) and as an Exemplar School by Vermont PBIS. Rebecca is the author of the blog, School Counseling by Heart, and was named Vermont School Counselor of the Year for 2016. She is a member of ASCA and VTSCA. She can be reached at [lallierr@hartfordschools.net](mailto:lallierr@hartfordschools.net).



# PRESENTERS *(CONTINUED)*

**Dr. Susan Lane** currently serves as Senior Advisor to the Commissioner for P-16 Access and Alignment Policy at the Massachusetts Department of Higher Education. In that role her focus is P-16 collaborative activities that include working with the Massachusetts' P-16 network to develop and implement a definition of college and career readiness for the Commonwealth, aligning P-12 and higher education college ready standards, and collaborating on the development of Massachusetts' Next –Generation Assessment. Prior to this position Dr. Lane was Senior Executive for National Programs at Lesley University in Cambridge and has also served as President of The New England Institute of Art, and as Associate Vice Chancellor for Professional and Continuing Education at UMass Dartmouth.

**Patrick Leduc** is the CIO and Vice President of Career and Education Outreach for Vermont Student Assistance Corporation and has held numerous positions prior to his current executive role where he oversees Human Resources, Information Technology, and state-based outreach services include GEARUP, Talent Search, and EOC. Mr. Leduc holds a degree in computer science, is chair of his local School Board, holds seats on various nonprofit, community-based boards, and is active in the development of scholarships for underserved populations

**Kate Leveille** earned her B.A in Communication from the University of Southern Maine and her M.S in Leadership from Duquesne University. As a lifelong Maine resident, Kate is passionate about helping to raise the aspirations of Maine students. Her primary role with MaineCAN will be to help bring together college access opportunities for Maine citizens. Previously Kate has worked to bring a college and career exploration program to students and families in Maine. She has an extensive college planning background having served as the Director of College Counseling at Bridgton Academy. Currently she serves as the co-chair of the Jump\$tart Coalition of Maine's Board of Directors.

**Christine Luzi** is a faculty member in the Department of Counselor Education at Bridgewater State University. She has spent the last 18 years working between college admission (Suffolk University, Lasell College), school counseling and career readiness (Lincoln-Sudbury Regional HS, Westborough HS, Framingham HS). Christine has been affiliated with Massachusetts-based professional organizations in college and career readiness (NEACAC, MASCA) throughout her career. She received her Master of Education in School Counseling and CAGS in Mental Health Counseling from Suffolk University.

**Debbie McCann** is the Director of Educational Talent Search/TRIO at the University of New Hampshire. This program serves 1160 low income, first generation students in New Hampshire. She is a member of NHEOA, NEOA, NEACAC and NHASFAA. She formerly served as the Associate Director and the Middle School Coordinator for Talent Search. She can be reached at [dmccann@unh.edu](mailto:dmccann@unh.edu)

**Jennifer Parzych** is a school counselor educator at Southern Connecticut State University, and a former high and middle school counselor of 15 years. She is a team member of the CT Consortium for School Counseling and Postsecondary Success. Jennifer is a past-president of CSCA and is currently serving as president-elect for CACES. She can be reached at [parzychj1@southernct.edu](mailto:parzychj1@southernct.edu)

**Bill Pepin** is a School Counselor and Director of School Counseling for the North Smithfield School District. He is a member of NEACAC, ASCA, RISCA (Past-President), LFA/RI (Vice-President) and NACAC. Bill can be reached at [wpepin@nsps.us](mailto:wpepin@nsps.us) and has been a school counselor since 2001.



# PRESENTERS (CONTINUED)

**Dr. Rachelle Pérusse** is an Associate Professor in the School Counseling Program at the University of Connecticut, and received her Ph.D. in Counselor Education from Virginia Tech. Since becoming a school counseling professional in 1992, she has been an active member of the school counseling profession, and an advocate for educational equity. She is the Chair of the Connecticut (CT) Consortium for School Counseling and Postsecondary Success and CT Team Leader of Mrs. Obama's Reach Higher Initiative's White House Convenings.

**Dr. Tim Poynton** is an Associate Professor and Graduate Program Director in the School Counseling Program at the University of Massachusetts Boston. Previously, he was a School Counselor at a school serving grades 6-12, and Senior Research Fellow at the Ronald H. Frederickson Center for School Counseling Outcome Research & Evaluation at UMass Amherst. He is also the developer of the EZAnalyze data analysis tools, designed to assist school counselors in data collection and analysis.

**Erica Rose** is the Senior Director of Programs MA for uAspire, a national leader in the field of college affordability advising. Erica oversees program quality and implementation across high schools in Massachusetts to ensure that as many low-income, first-generation college students receive financial aid resources and information they need to make an informed decision on college choice. Erica can be reached at [ericar@uaspire.org](mailto:ericar@uaspire.org).

**Carlos E. Santiago** was appointed as Commissioner of Higher Education for Massachusetts in July 2015. He joined the Massachusetts Department of Higher Education in April 2013 as the Senior Deputy Commissioner for Academic Affairs. Previously he served as Chancellor of the University of Wisconsin – Milwaukee and provost and chief operating officer at the University at Albany, (SUNY). He was a professor of economics at UWM and SUNY-Albany and holds a Ph.D. in economics from Cornell University. In 1996 and 2011 he was named one of the 100 most influential Hispanics in the United States by *Hispanic Business* magazine.

**Martha Savery** is Director of Public Affairs and Communications at MEFA. She began her career working in Financial Aid and Admissions at colleges and universities in Massachusetts. Her professional work has been focused on helping families create a pathway to post-secondary success. She can be reached at [msavery@mefa.org](mailto:msavery@mefa.org).

**Mandy Savitz-Romer** is a faculty member and director of the Prevention Science and Practice/CAS in Counseling program at the Harvard Graduate School of Education. She is the co-author of *Ready, Willing, and Able: A developmental approach to college access and success* published by Harvard Education Press. She can be reached at [savitzma@gse.harvard.edu](mailto:savitzma@gse.harvard.edu).

**Joshua Steckel**, author of *Hold Fast to Dreams: A College Counselor, His Students, and the Vision of a Life Beyond Poverty* is currently the Senior College and Career Planning Manager for New York City's College Access for All Initiative, an effort to develop college-going culture in all of the city's schools and deliver high quality postsecondary planning services to all of the city's students. Josh has been a teacher and school counselor in New York City schools since 2000. *Hold Fast to Dreams* follows ten of Josh's former students over six years, and offers an up-close look at what it's like to be a low-income student trying to make good on the promise of opportunity through higher education.



# PRESENTERS *(CONTINUED)*

**Mila Tappan** is the Manager of College Access and Outreach at the Finance Authority of Maine (FAME), where she has worked for the last eight years. Her areas of expertise include FAFSA completion, the financial aid process, and preparing to pay for college. Prior to joining FAME, Mila worked as an Associate Director of Financial Aid at the University of Maine, where she was employed for sixteen years. Before working in financial aid, Mila worked for the Maine State Legislature in the Office of Policy and Legal Analysis as a Research Assistant. She can be reached at [mtappan@famemaine.com](mailto:mtappan@famemaine.com).

**Kimberly S. Traverso**, LPC, is an Education Consultant for the Connecticut State Department of Education, where she provides support and leadership in many areas related to the School Counseling /College and Career Readiness, culturally responsive education, disproportionality, and behavioral/mental health. Additionally, she is one of the program managers for the federal grant School Climate Transformation Project and PBIS. She is a member of the CT Reach Higher, CSCA (past-president) and ASCA. She has 18 years of experience as a Student Support Services Director and a Department Head of School Counseling. Kimberly is currently pursuing a doctoral degree in Education Psychology at the University of Connecticut. She can be reached at [Kimberly.traverso@ct.gov](mailto:Kimberly.traverso@ct.gov).

**Nikki Vachon** has worked in financial aid for 18 years at a private college in Maine before joining the Finance Authority of Maine as a College Access Counselor. Nikki's primary role at FAME is to help Maine residents pursue higher education which aligns perfectly with the Reach Higher Initiative. Nikki is the Team Lead for Reach Higher Maine and can be reached at [NVachon@FAMEmaine.com](mailto:NVachon@FAMEmaine.com).

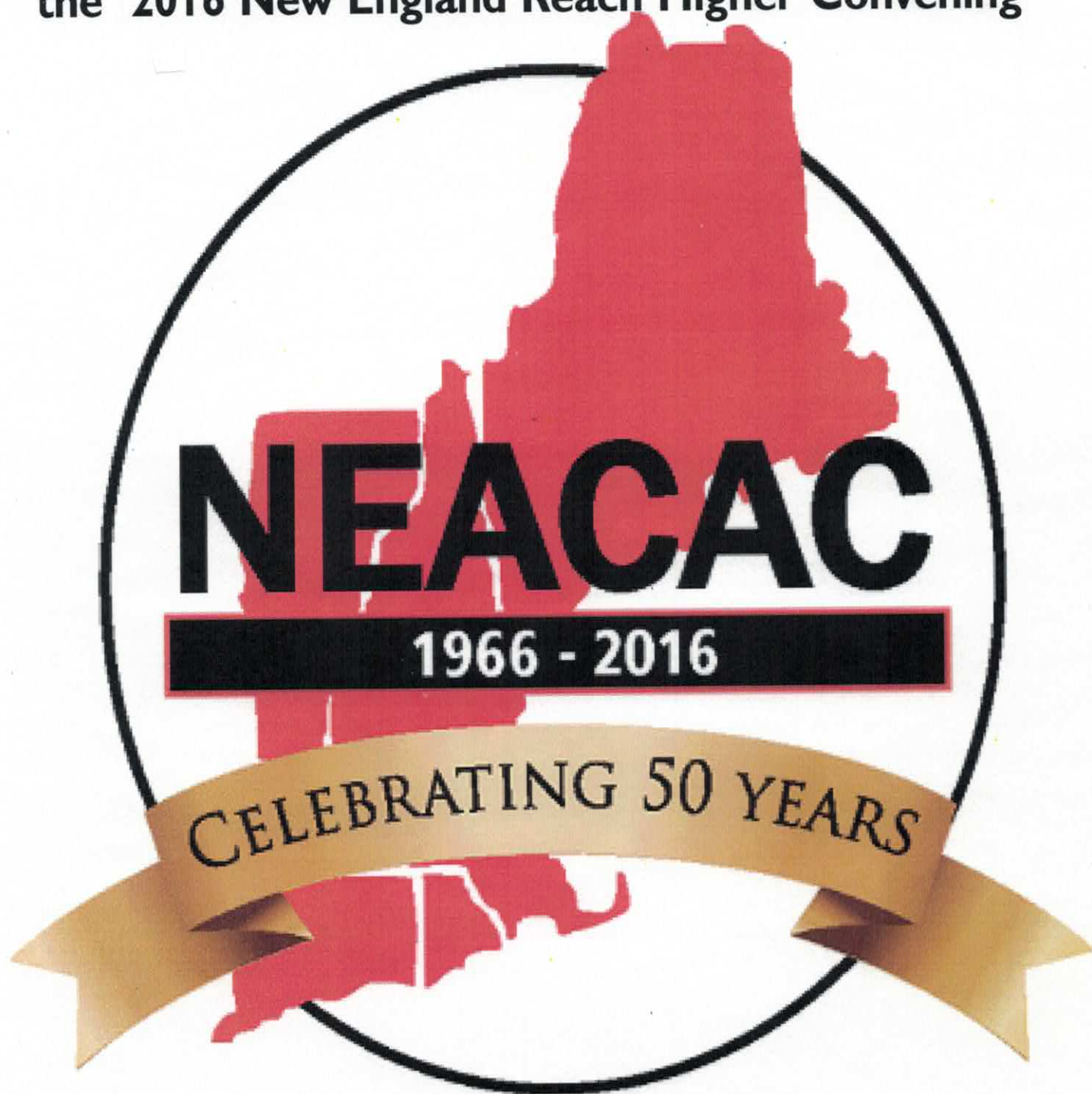
**Keith Westrich** is currently the Acting Associate Commissioner for the Massachusetts Department of Elementary and Secondary Education's Office of College, Career, and Technical Education (CCTE). He oversees programs and activities including Alternative Education, Career and Technical Education, College Access, Connecting Activities, Dropout Prevention and Recovery, Early College Career Pathways, and High School Renewal.

**Chanda Womack** manages and oversees all aspects of the High School Programs and Advisory for the College Crusade of RI; largest college access and success program in the state. She provides supervision, direction, leadership, and technical support to Advisory Support Specialist and Advisors as well as assist with the coordination of resources with the Department of Education, school districts, and community partners to facilitate the transition of Crusaders into post-secondary education. She is also an elected Regional Council Member for the College Board. She can be reached at [cwomack@thecollegecrusade.org](mailto:cwomack@thecollegecrusade.org).

**Carol Woodbury** has served as Superintendent of the Dennis-Yarmouth Regional School District since 2005. In 2013 and 2015 the Dennis-Yarmouth Regional High School was awarded the U.S. News & World Report Silver Medal for America's Best High Schools. Ms. Woodbury is a member of the Cape & Islands Workforce Investment Board's (WIB) Youth Council Executive Board. She is a member of the Massachusetts Association of School Superintendents serving on the Executive Committee. She can be reached at [woodburc@dy-regional.k12.ma.us](mailto:woodburc@dy-regional.k12.ma.us).

**Don Yu** is the Director of the Better Make Room Campaign. Prior to joining Civic Nation, Don served as the chief of school transformation at the U.S. Department of the Interior and as special advisor to U.S. Secretary of Education Arne Duncan. He is a former teacher and school district attorney.

**The New England Association for College  
Admission Counseling is proud to be a sponsor for  
the 2016 New England Reach Higher Convening**





**Reaching Higher In New England: Increasing Postsecondary  
Access and Opportunities for All Students**

State: Connecticut	
Team Lead/Chair: Dr Rachelle Perusse	
Team Members/Roles:	
<b>Dr. Rachelle Perusse</b>	<b>Associate Professor</b>
Dr. Erik Hines	Assistant Professor
Dr. Jennifer Parzych	Assistant Professor
Dr. Margaret Donohue	Assistant Professor
Dr. Kathleen Barrett	Professor
Dr. Nicole DeRonck	Assistant Professor
Pam Anderson	Adjunct professor and clinical coordinator in the Counselor
Jennifer Dudley	Wells Fargo, Business/Industry
Brian Tracey	Graduate Student
Vanessa Montorsi	Department Chair School Counseling
Mark Danaher	Past President at National Career Development Association
Sonia Dinnall	Executive Director of College and Career Readiness Project Director; High School Graduation Initiative Grant
Frank Staples	East Hartford Public Schools, Department Chair School Counseling
Holly Franquet	Director-The College Place-CT
March Kessler	Executive Director, ECMC Foundation
Kimberly Traverso	Connecticut State Department of Education
<ul style="list-style-type: none"> <li>All six school counseling programs offer a three credit equity based college and career readiness course including alignment with learning objectives.</li> <li>Training school counseling master's students in two separate days of research based curriculum (The ECMC curriculum)</li> <li>- 4th to 8th grade curriculum</li> <li>- 9th-12th grade curriculum)</li> <li>Working with six New England states to build an ethos of collaboration and networking. The aim is to provide a system of support and resources</li> <li>Assisted with developing a Regional New England Convening at Assumption College on August 16, 2016</li> <li>Collected Believing the College Dream (grades 4-8) and Realizing the College Dream (high school) data to determine positive outcome results to increase awareness and preparedness for parents and students about post-secondary education</li> </ul>	
Metrics to measure progress that has been or will be utilized, multiple data sources-school data, capstone projects, surveys, observations, assessments and evaluation tools	
2016-17 School Year Goals: <b>Goal 1: To expand a three-credit equity based college and career readiness course for aspiring school counselors.</b>	
<b>Goal 2: To enhance and expand statewide efforts to build an ethos of collaboration and networking across regional states that aligns to postsecondary planning and preparation (PPP) initiatives.</b>	
Meeting(s) planned: <b>CT established quarterly meeting per year</b>	
Social Media presence (e.g.: Website/Twitter/Instagram) <b>No</b>	

**8:00 AM – 4:00 PM**

**Reaching Higher In New England: Increasing Postsecondary  
Access and Opportunities for All Students**

## Reach Higher State Report - July 2016

State:	Maine
Team Lead/Chair:	Nikki Vachon, Team Lead, <a href="mailto:NVachon@FAMEmaine.com">NVachon@FAMEmaine.com</a>
Team Members/Roles:	<ul style="list-style-type: none"> <li>Matthew Marks, Chief Executive Officer, Associated General Contractors Maine</li> <li>Emily Sevigny, School Counselor, Brewer High School</li> <li>Maggie Davis, Executive Director, CollegeforME-Androscoggin</li> <li>Mercedes Pour, State Director, Early College for ME</li> <li>Ed Cevone, Executive Director, Educate Maine</li> <li>Nicole Haigh, VISTA/AmeriCorps Volunteer</li> <li>Nikki Vachon, College Access Counselor, FAME</li> <li>Mary Callan, Program Director, GEAR UP</li> <li>Sally Beaulieu, GEAR UP Regional Facilitator</li> <li>Deborah Drew, Ed. D., Director, Graduate Counseling Programs, Husson University</li> <li>James Westhoff, Director of Career Services, Husson University</li> <li>Caroline Moore, Community Development Associate, Island Institute</li> <li>Craig Larrabee, President &amp; CEO, Jobs for Maine Grads</li> <li>Michael LeVert, Chief Strategy Officer, Jobs for Maine's Graduates</li> <li>Katie Flood-Gerow, Waterville Program Manager, Let's Get Ready</li> <li>Yellow Light Breen, President &amp; CEO, Maine Development Foundation</li> <li>Amertah Perman, Chief Operating Officer, Maine Development Foundation</li> <li>Kate Leveille, Project Coordinator, MaineCAN</li> <li>Sarah Ricker, Maine Department of Education</li> <li>Wendy Ault, Executive Director, MELMAC</li> <li>Beth Carlton, Student Services Coordinator/School Counselor, Mid-Maine Technical Center</li> <li>Maria Frankland, Gear Up Coordinator, MSAD #37</li> <li>Ari Kelly, Guidance Counselor, MSAD #27 Fort Kent</li> <li>Deb McIntyre, School Guidance Counselor, Penobscot Valley HS &amp; Howland MS</li> <li>Lisa Plimpton, Data specialist, Plimpton Research</li> <li>Kim Hutchinson, Project Launch</li> <li>Annette Nelligan, Ed.D., Counselor Education, University of Maine</li> <li>Mario De La Garza, Ph.D., NCC, Assistant Professor, Counselor Education Program, University of Southern Maine</li> <li>Laurie Davis, Director TRIO Programs, Upward Bound and Student Support Services, USM</li> <li>Lisa Hallen, Guidance Director, Winslow High School</li> </ul>



	<ul style="list-style-type: none"> <li>• John P. Keane, Principal, Piscataquis Community Secondary School</li> <li>• Jessica Woods, School Counselor, Islesboro Central School</li> <li>• Dolores Charest, School Counselor, Biddeford High School</li> <li>• Ravi Jackson, Dept. of Special Projects, Maine Dept. of Education</li> </ul>
Major Activities Completed:	2016 <ul style="list-style-type: none"> <li>• Formed Maine team with over 30 team members</li> <li>• Met to discuss needs in Maine as well as state statistics on HS completion &amp; continuing on to post-secondary training</li> <li>• Formed action items and draft vision statement</li> </ul>
2016-17 School Year Goals:	<ul style="list-style-type: none"> <li>• Finalize goals &amp; action plan</li> <li>• List catalog of services in Maine available to counselors</li> </ul>
Meeting(s) planned:	
Social Media presence (e.g.: Website/Twitter/Instagram)	<a href="http://www.mainecollegeaccess.org/reach-higher-maine/">http://www.mainecollegeaccess.org/reach-higher-maine/</a>

**Reaching Higher In New England: Increasing Postsecondary  
Access and Opportunities for All Students**

## Reach Higher State Report - August 2016

State:	Massachusetts
Team Lead/Chair:	Bob Bardwell, Team Lead, bardwellr@monsonschools.com, 413.267.4589x1109
Team Members/Roles:	<p>Leadership Team</p> <p>Bob Bardwell (Monson High School), Chair, Mark Bilotta (MassEdCo), Ruth Carrigan (Whitman Hanson Regional High School/MASCA), Laura Dziorny (Rennie Center), Jackney Joseph (Mass. Business Alliance for Education), Tim Poynton (UMASS Boston), Scott Solberg (Boston University) &amp; Keith Westrich (MA Department of Elementary &amp; Secondary Education)</p> <p>Four Work Groups</p> <ol style="list-style-type: none"> <li>1. Preparing All for Viable Careers and Citizenship (Helen O'Donnell &amp; Beth Hennessey, Co-chairs)</li> <li>2. Financing Postsecondary Education (Mark Bilotta &amp; Martha Savery, Co-Chairs)</li> <li>3. Postsecondary Access, Persistence, and Completion (Jan Tkaczyk &amp; Robert Dais, Co-Chairs)</li> <li>4. Marketing &amp; Communication (Jackney Joseph, Chair)</li> </ol> <p>+93 others who attend Guiding Coalition meetings and are on our mailing list</p>
Major Activities Completed:	<p>2014-2016</p> <ul style="list-style-type: none"> <li>• Set up leadership and governance structure &amp; RHM flow chart</li> <li>• Conducted 8 Guiding Coalition meetings</li> <li>• Held four (Western New England, Springfield Technical Community College, Stonehill College &amp; UMASS Lowell) free school counselor day long trainings</li> <li>• DART data training workshop for counselors in March as a follow up to our November Reach Higher PD days.</li> <li>• Collaborated with MASCA to offer 18 Reach Higher Breakout sessions at the 2016 Spring MASCA Conference</li> <li>• Co-sponsored Massachusetts Financial Literacy Summit with State Treasurer Deb Goldberg on March 11, 2016 in Worcester</li> <li>• Chose five strategic goals and began to develop the plan to achieve them</li> </ul>
Metrics to measure progress that have been or will be utilized	<ul style="list-style-type: none"> <li>• Increase the 4 and 5 year cohort high school graduation rate</li> <li>• Increase the number of MA High School Program of Studies (MassCore) completers</li> <li>• Increase the number of students that are known to participate in career development activities</li> <li>• Increase the percentage of high school graduates that enroll in postsecondary education</li> <li>• Decrease the percentage of high school graduates enrolled in postsecondary education that enroll in remedial coursework</li> </ul>



2016-17 School Year Goals:	<ul style="list-style-type: none"> <li>• Finalize our Strategic Plan</li> <li>• Produce 1st electronic newsletter to send to superintendents, principals and school counselors</li> <li>• Ensure each work group coordinates at one or more major activities in 2016-17 (e.g: Creating a Career &amp; College Readiness Certificate and data trainings for school counselors)</li> <li>• Introduce the activity measurement template and begin to collect data to see if goals are impacted by our events</li> </ul>
Meeting(s) planned:	<p>The Guiding Coalition will meet quarterly in the 2016-17 school year from 8:30-11:30</p> <ul style="list-style-type: none"> <li>• September 15 @ MSSAA, Franklin</li> <li>• December 1 @ MassEdCo, Worcester</li> <li>• March 30 TBD</li> <li>• June 29 TBD</li> </ul> <p>The Leadership team will meet via conference call in months that the Guiding Coalition does not meet. The Leadership Team held a summer retreat on July 25 at Boston University.</p>
Online/Social Media presence (e.g.: Website/ Twitter/ Instagram)	<p><a href="http://www.reachhigherma.org">www.reachhigherma.org</a></p> <p><a href="mailto:reachhigherma@gmail.com">reachhigherma@gmail.com</a></p> <p>#ReachHigherMA</p>

**Reaching Higher In New England: Increasing Postsecondary  
Access and Opportunities for All Students**

## Reach Higher State Report - August 2016

State:	NH	
Team Lead/Chair:	<b>Tori Berube, ACAC State Coordinator</b> VP, College Planning & Community Engagement The NHHEAF Network Organizations (603)227-5310 tberube@gsmr.org	
Team Members/Roles:	<b>Ed MacKay, Chair</b> Division of Higher Education Director NH Department of Education (603) 271-0256 Edward.MacKay@doe.nh.gov	<b>Tom Horgan</b> President & CEO NH College & University Council 603-225-4199, x318 horgan@nhcuc.org
	<b>Ross Gittell</b> Chancellor Community College System of NH (603)230-3501 rgittell@ccsnh.edu	<b>Beth Doiron</b> Director of College Access and DoE Programs and Initiatives Community College System of NH (603) 230-3530 bdoiron@ccsnh.edu
	<b>Stephanie Lesperance</b> Associate Director Campus Compact for NH / NH College & University Council (603)223-2302, x310 soule@compactnh.org lesperance@nhcuc.org	<b>Debby Scire</b> Director, Campus Compact for NH (603)223-2302, x314 scire@compactnh.org
	<b>Tara Payne</b> Associate Vice President of Enrollment Granite State College 603-513-1398 tpayne@nhheaf.org	<b>Peggy Richmond</b> Representative, NHCUC Admissions Directors Committee Director of Admissions Keene State College (603)358-2276 mrichmon@keene.edu
	<b>Elizabeth Keuffel</b> Past President, NH Association of Student Financial Aid Administrators Director of Financial Aid Saint Anselm College (603)641-7203 ekeuffel@anselm.edu	<b>Charles Langille</b> Past President, NH School Counselor Association School Counseling Coordinator Conant High School (603)532-8131, x228 c.langille@sau47.org



	<b>Todd Leach</b> Chancellor University System of New Hampshire todd.leach@usnh.edu	<b>Judy Burroughs</b> Director of Student Aid New Hampshire Charitable Foundation (603)225-6641 x1224 jb@nhcf.org
	<b>Scott Power</b> Director, NH Scholars Initiative NH College & University Council (603)225-4199 x300 spower@nhcuc.org	<b>Rene Drouin</b> President & CEO Granite State Management & Resources The NHHEAF Network Organizations (800)525-2577 x124 rdrouin@gsmr.org
Major Activities Completed:	<ul style="list-style-type: none"> <li>• Entering third year of "I Am College Bound/I Applied" College Application Week with private fundraising for scholarships</li> <li>• Exploring statewide FAFSA Completion project through NH Department of Education/Higher Education Division</li> </ul>	
Metrics to measure progress that has been or will be utilized	<ul style="list-style-type: none"> <li>• 65 x 25 Goal <ul style="list-style-type: none"> <li>○ Statewide goal to have 65% of state's population to have a two or four year degree – or high-quality credential – by 2025 NH Coalition for Business and Education); as of 2014, state at 49.2% with degree (up from 46.4% in 2013), with an additional 4% with high-quality credential</li> </ul> </li> <li>• Number of public high schools participating in College Application Week. <ul style="list-style-type: none"> <li>○ (6 in 2014, 14 in 2015, 23 in 2016, expected 32 in 2017)</li> </ul> </li> <li>• Number of high school seniors participating in College Application Week <ul style="list-style-type: none"> <li>○ (264 in 2014, 534 in 2015, expected 900 in 2016)</li> </ul> </li> <li>• Number of NH high school seniors submitting the FAFSA. <ul style="list-style-type: none"> <li>○ Develop FAFSA Completion program, providing US Department of Education ISIR data to partner high schools which will encourage students who have not filed the FAFSA to do so.</li> </ul> </li> <li>• Number of high school seniors enrolling in post-secondary education immediately after graduation <ul style="list-style-type: none"> <li>○ 56.45% immediately enrolled in either a two-year (14.55%) or four-year (41.9%) institution after graduating from high school in 2015</li> </ul> </li> </ul>	
2016-17 School Year Goals:	<ul style="list-style-type: none"> <li>• See above</li> </ul>	
Meeting(s) planned:	<ul style="list-style-type: none"> <li>• College Application Week Steering Committee Meetings held quarterly (August, November, February, May)</li> <li>• Six school counselor/college access professional trainings scheduled at NHHEAF Network (Events &amp; Resources folder at <a href="http://www.nhheaf.org">www.nhheaf.org</a>)</li> </ul>	
Social Media presence (e.g.: Website/Twitter/Instagram)	Website: <a href="http://www.nhheaf.org/index.asp?page=events_collegeboundinfo">http://www.nhheaf.org/index.asp?page=events_collegeboundinfo</a> Twitter: #collegeboundnh	

**Reaching Higher In New England: Increasing Postsecondary  
Access and Opportunities for All Students**

## Reach Higher State Report - August 2016

State:	Rhode Island
Team Leada/Chaira:	Gail Walker and Stacy Crooks, RISLA, scrooks@cpcpri.org or gwalker@risla.com, 401-468-1737
Team Members/Roles:	Charles Kelley, Rhode Island Student Loan Authority, Noel Simpson, RI Student Loan Authority, Courtney McEntee, College Planning Center, Solanchi Fernandez, College Planning Center, Amy Cembor, Providence College, Erik DeAngelas, Brown University, Bill Pepin, North Smithfield High School, Maria Carvalho, College Crusade, Michael Joyce, RI Office of Post Secondary Education, Daniel Egan, Association of Independent Colleges and Universities of RI, Amber Caulkins, Association of Independent Colleges and Universities of RI, Gail Mance - Rios RI Office of Post Secondary Education, Jillian Belanger, RI Department of Education, Mary McDonald Portsmouth Abbey (retired), Arthur Nevins Governors Office.
Major Activities Completed:	2014-2016 <ul style="list-style-type: none"> <li>• 4 College signing day events</li> <li>• 21 Common Application workshops at 8 different high schools</li> <li>• 2 Annual College Fairs</li> <li>• 10 Early Awareness events</li> <li>• College Planning Center, College Guides and College Crusade assisted with college access in High Schools throughout RI</li> <li>• Admission /Financial presentations throughout RI High schools and Community Based organizations</li> </ul>
Metrics to measure progress that has been or will be utilized	Students register for all events prior to attending. We will work with the Department of Post Secondary Education to determine FAFSA completion per high school.
2016-17 School Year Goals:	<ul style="list-style-type: none"> <li>• Increase the number of FAFSA completion nights throughout the state of RI.</li> <li>• Kick off event to promote the new start of the FAFSA season</li> <li>• Increase the number of Common Application workshops</li> <li>• Annual Guidance breakfast to promote Reach Higher and to provide training Counselors on College Admission and Financial Aid</li> </ul>
Meeting(s) planned:	The RI Reach Higher Leadership team will meet quarterly in the 2016-17 school year.
Social Media presence (e.g.: Website/Twitter/Instagram)	Twitter @ReachHigherRI



**Reaching Higher In New England: Increasing Postsecondary  
Access and Opportunities for All Students**

## Reach Higher State Report - August 2016

State:	Vermont
Team Lead/Chair:	Patrick Leduc, VSAC, 802.654.3718, Leduc@vsac.org
Team Members/Roles:	TBD
Major Activities Completed:	<p>VSAC does not officially have a Reach Higher team yet but we at the Vermont Student Assistance Corp. (created in 1965 as a public nonprofit agency) help Vermonters who want to go to college or other training after high school. We provide grants, loans, scholarships, career and education planning. Our mission is to ensure that all Vermonters have the necessary financial and information resources to pursue their education goals beyond high school.</p> <p>We maintain a statewide GEARUP and Talent Search teams, construct and oversee multi-year and whole school aspiration projects, provide in-school counseling, run state wide "College pathways" events and much more.</p>
Metrics to measure progress that has been or will be utilized	VSAC tracks statewide college aspiration rates through a senior survey, tracks outcomes of its major federal grants, supports and tracks students funded through GEARUP into their 3 <sup>rd</sup> semester in college and works with high schools across the state as the state grant agency to inform counselors which students have completed their FAFSA's and which have not.
2016-17 School Year Goals:	Increase FAFSA completion and aspiration rates
Meeting(s) planned:	VSAC holds numerous meetings across that state with it's partners (other non-profits, funders, High Schools, Middle Schools, associations, State Colleges, and Vermont's Agency of Education)
Social Media presence (e.g.: Website/Twitter/Instagram)	<a href="http://www.vsac.org">www.vsac.org</a> @VSAC @802GRIT

Abraham Aguilar  
UTI Graduate  
Porsche of Stevens Creek

# AT UTI, WE'RE FOR SUCCESS

We're for the success of students who don't fit the four-year college mold but are brilliant at making things work. We're for giving these hands-on heroes a quality education that matches their talents and serves their dreams.

UTI partners with leaders like BMW, Ford, Freightliner, General Motors, Mercedes-Benz and Porsche to deliver high-tech, hands-on training.

We put students first. We help them create careers they love in the booming transportation industry.

**We're for what you're for:** helping students' dreams come true.

**UTI.edu/Success**



*Chosen by Industry. Ready to Work.*

UTI cannot guarantee employment or salary. For information about our graduation rates, the median debt of students who completed the program and other important information, visit our website at [www.uti.edu/disclosure](http://www.uti.edu/disclosure).



SkillsUSA is a partnership of students, teachers and industry working together to ensure America has a skilled workforce.





# REACH HIGHER PLEDGE SHEET

## MY WORK ROLE

- ☐ School Counselor
- ☐ School Counselor Educator
- ☐ College Admission
- ☐ College Access Program/Non-Profit
- ☐ K-12 Administrator
- ☐ Graduate Student
- ☐ Higher Education
- ☐ Financial Aid Administrator
- ☐ Policy Maker/Legislator
- ☐ Business community member
- ☐ Other \_\_\_\_\_

## CONSIDERATION #1

What ideas/actions will you take back to your school, district or organization that will align with the goals of the Reach Higher initiative to help more students graduate from high school and pursue training and education beyond high school?

## CONSIDERATION #2

What commitment will you make to partner with your state's Reach Higher Team to move this initiative forward?

## CONSIDERATION #3

How will you connect with others to keep this momentum moving forward?

Name & title: \_\_\_\_\_

Email address/phone number: \_\_\_\_\_



# ASSUMPTION COLLEGE

- 1** La Maison Francaise  
**2** Bishop Wright Hall  
**3** Taylor Dining Hall  
**4** O'Connell Hall  
**5** DePaul Hall  
**6** Founders Hall  
**7** Texas Science Center  
**8** Admissions House  
**9** College Development and Counseling Center  
**10** Emmanuel House  
**11** Chapel of the Holy Spirit  
**12** The Trinity Family Campus  
**13** Emmanuel d'Alton Library  
**14** Information Technology Center  
**15** Fuller Hall  
**16** Senior Building  
**17** Francis Xavier Center  
**18** Kennedy Memorial Hall  
**19** Public Safety  
**20** Power Plant  
**21** Hagan Campus Center  
**22** La Maison Francaise  
**23** Sunday Hall  
**24** Robinson Hall  
**25** O'Connell Hall  
**26** Hardman Hall  
**27** Young Hall  
**28** Tennis Courts  
**29** Beaumont Hall  
**30** O'Connell Hall  
**31** Quinn Hall  
**32** Quinn Hall  
**33** Ameset House  
**34** Student Health Services  
**35** Student Health Facility  
**36** Auditor Hall  
**37** Tennis Courts  
**38** Norman & Marcus Field  
**39** Multi-Sport Stadium  
**40** Athletic Field  
**41** Worcester Hall  
**42** Wicks Hall  
**43** Living / Learning Center  
**44** South Hall  
**45** West Hall  
**46** Thayer Hall

- Parking Legend**  
**A** Main Lot  
**B** Taylor Lot  
**C** Kennedy Lot  
**D** The Hill  
**E** Tennis Courts  
**F** The Valley  
**G** Finance Lot  
**H** Francis Xavier  
**I** Library Lot  
**J** LLC Lot Upper  
**K** LLC Lot Lower  
**L** Pough, South, West Lots  
**M** Chapel and Admissions Lot  
**N** Francis Xavier  
**O** Public Safety  
**P** Public Lot - Lower Level

